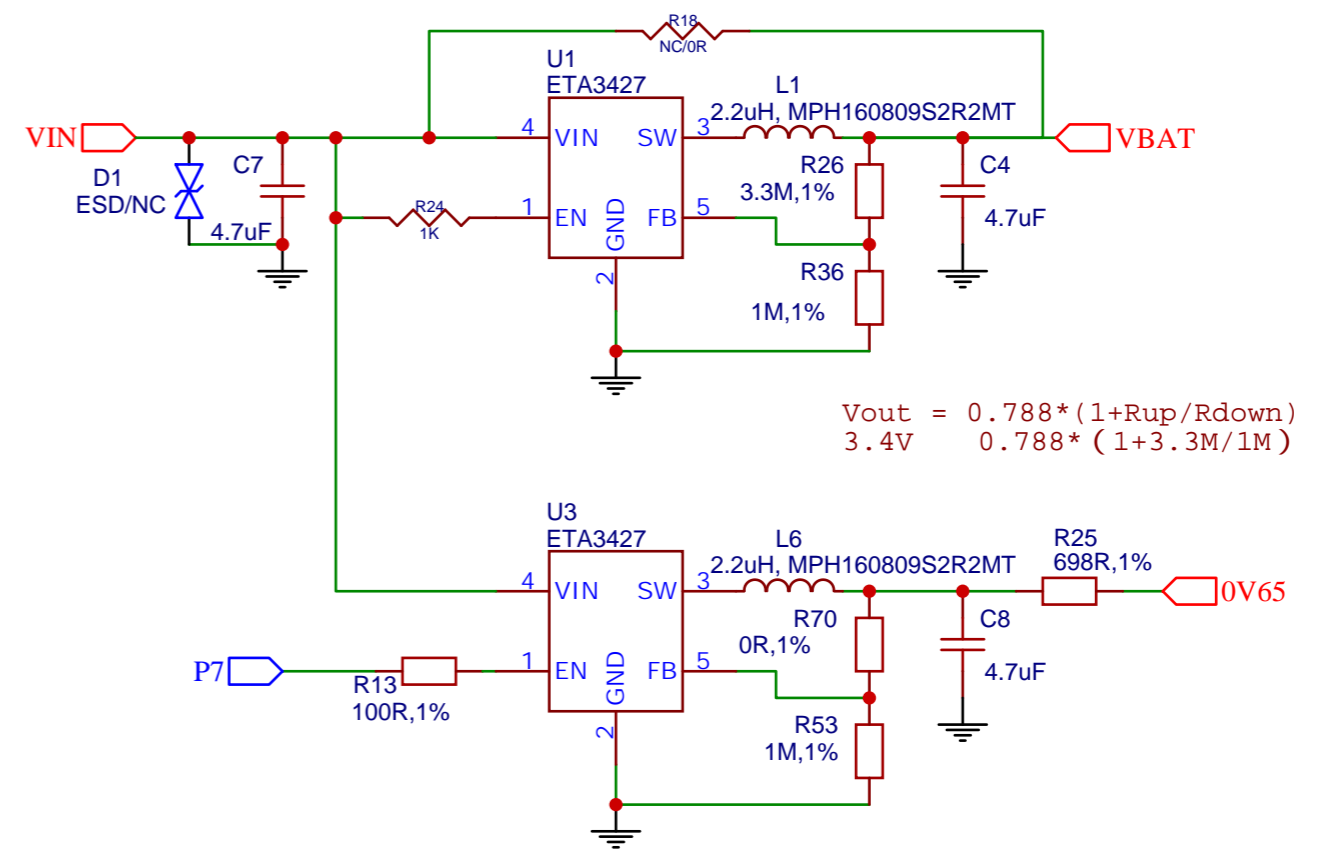
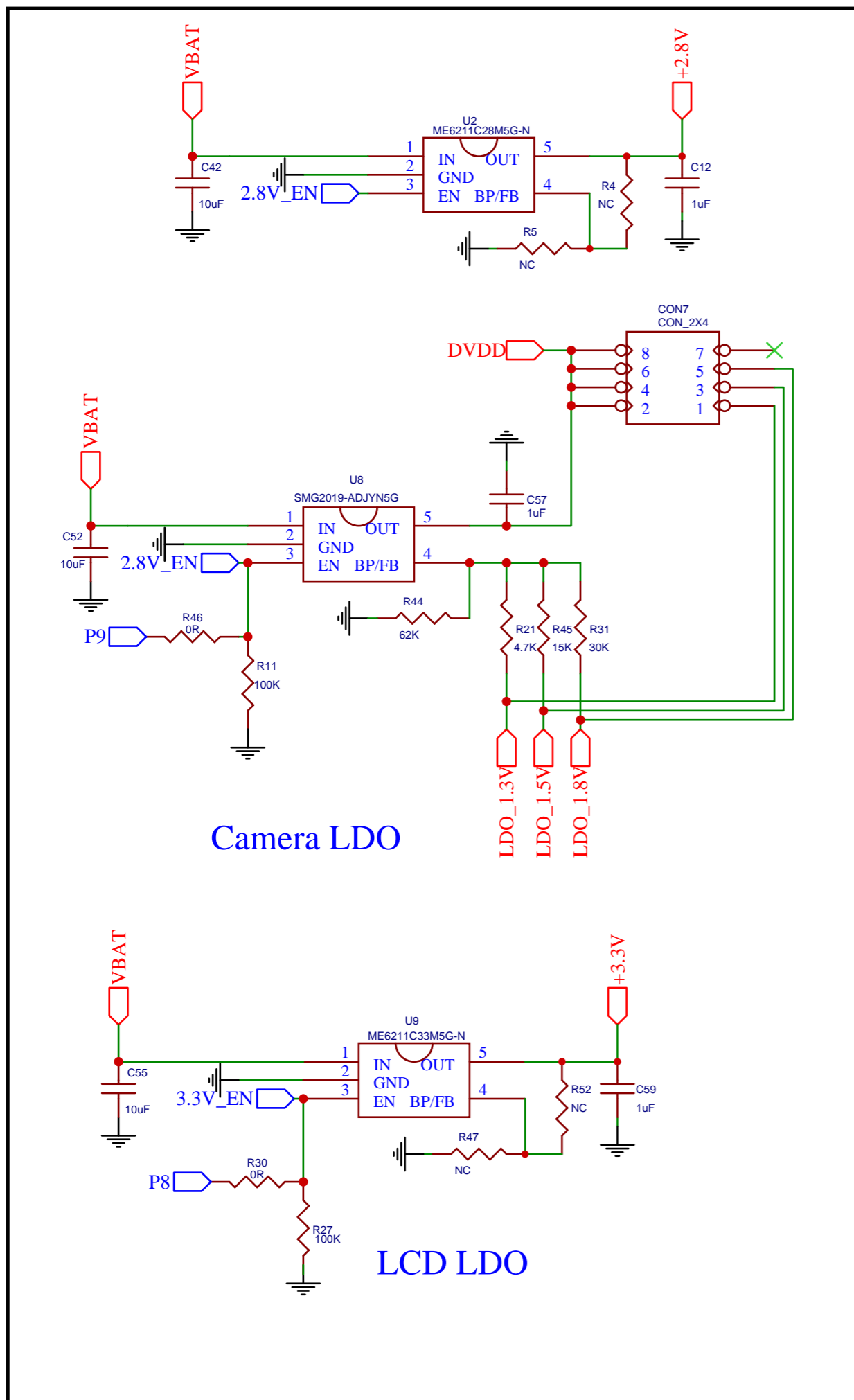


为降低保活电流，下面外置DC/DC可选：  
 1、加外置32.768K晶体提高精度，由于晶体与摄像头PXD0，PXD1共PIN，为了分时复用，摄像头电源需要能关闭。  
 2、当输入电源VIN远大于VBAT时，建议用DC/DC U1提高效率。  
 3、VIN与VDDDIG=0.65V之间加U3，因为芯片Deepsleep下VDDDIG会关闭导致漏电流，需要P7脚控制。  
 由于ETA3427不能输出0.65V，所以用R25分压，其它DC/DC能到0.65V电阻可省略。

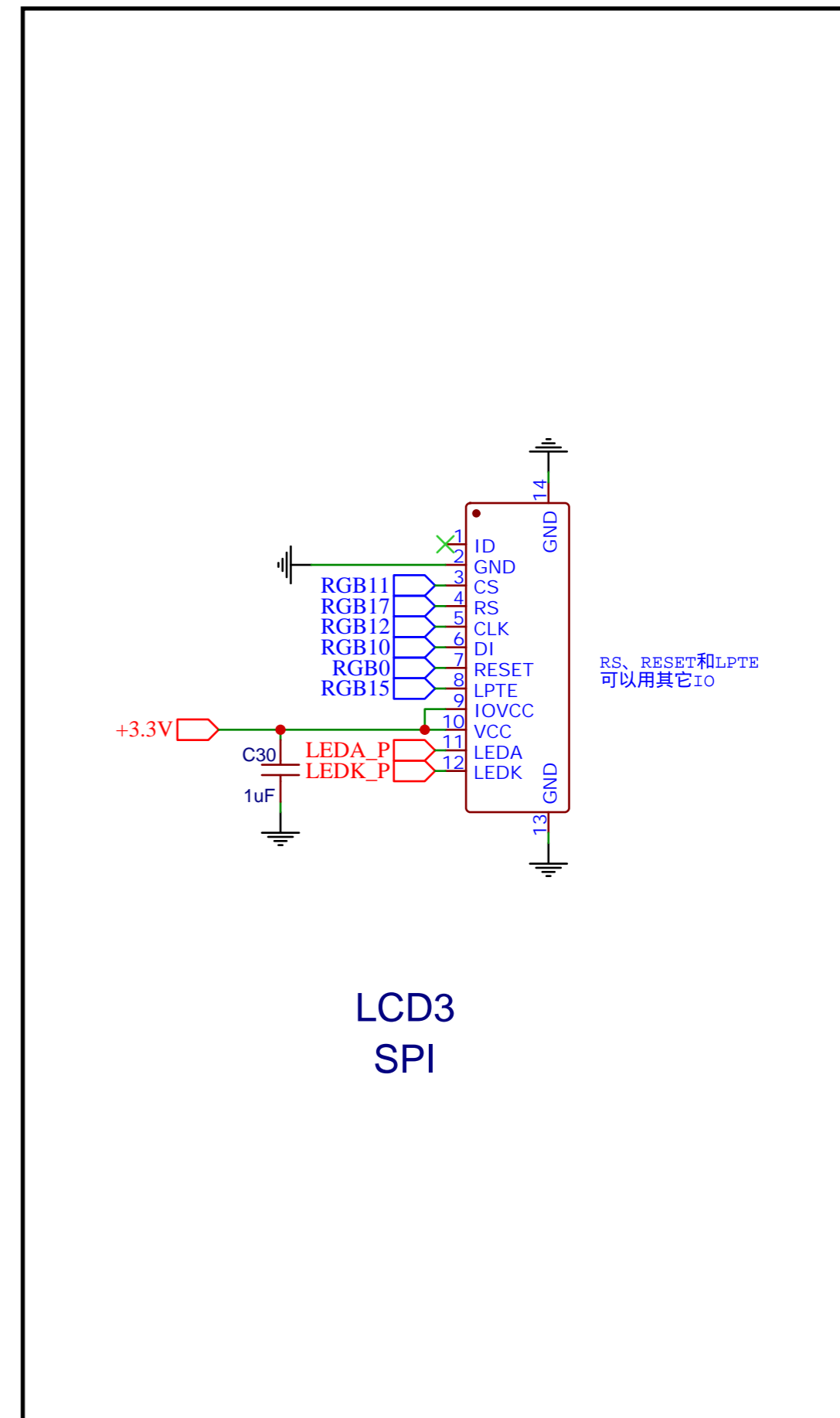
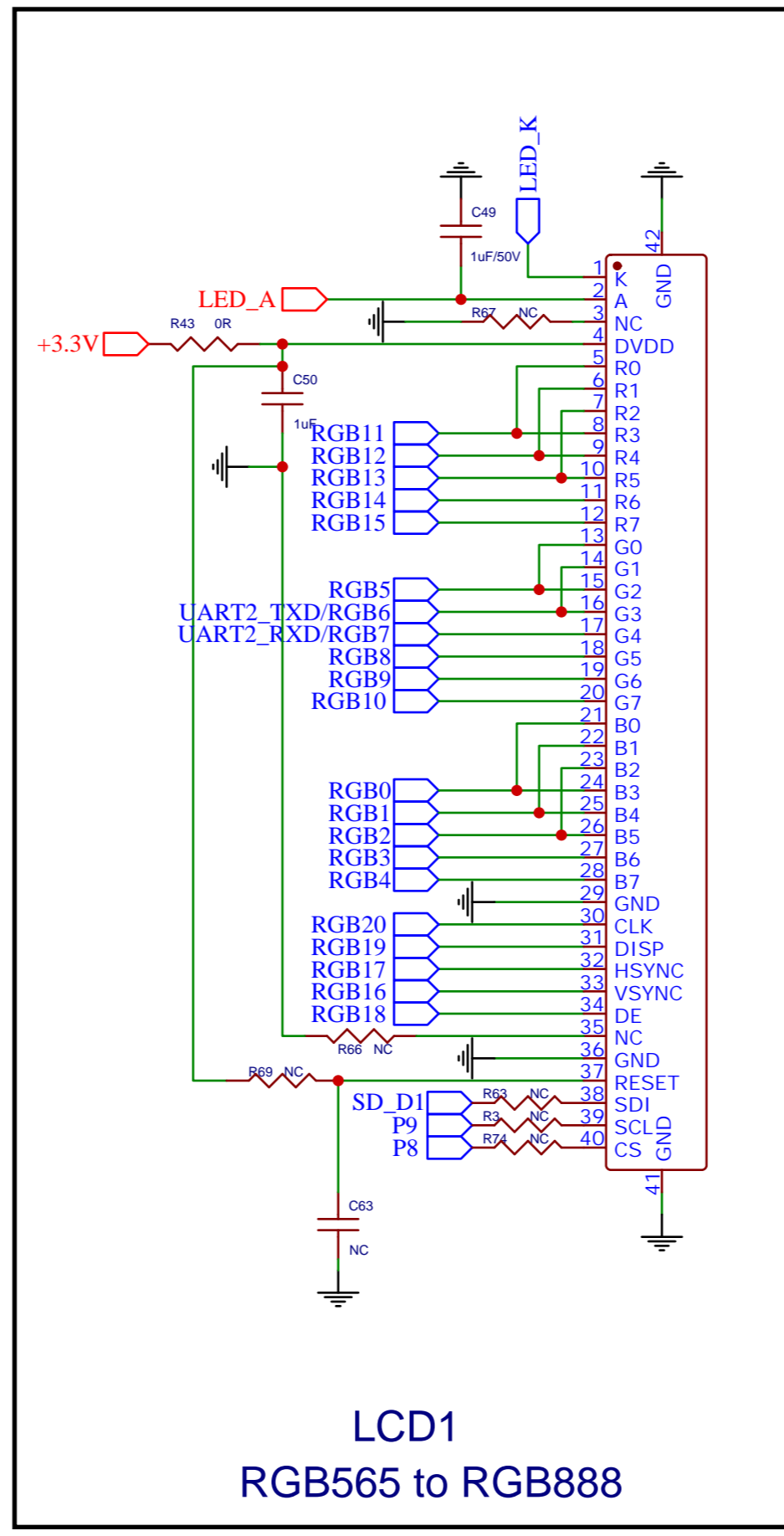
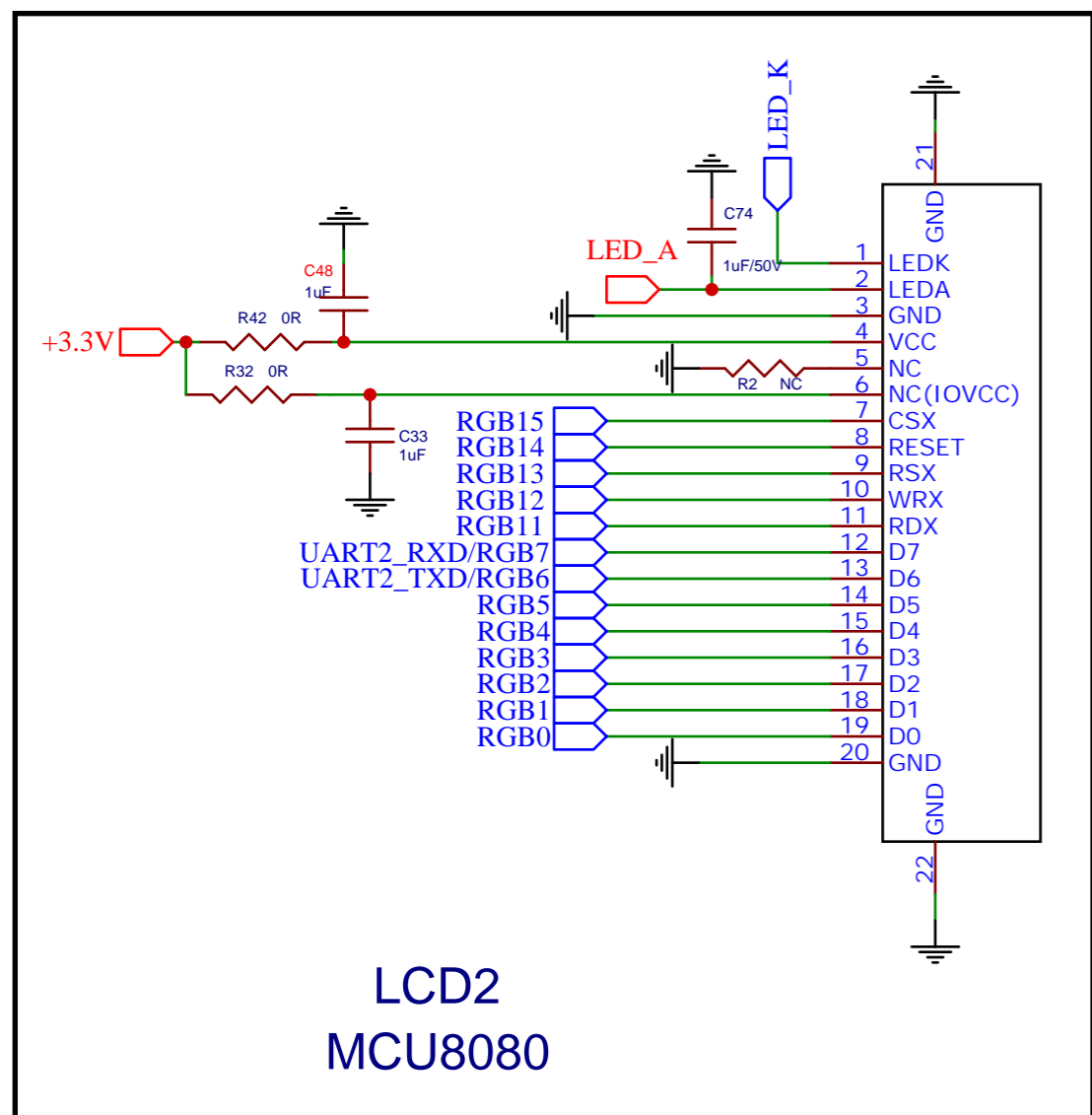
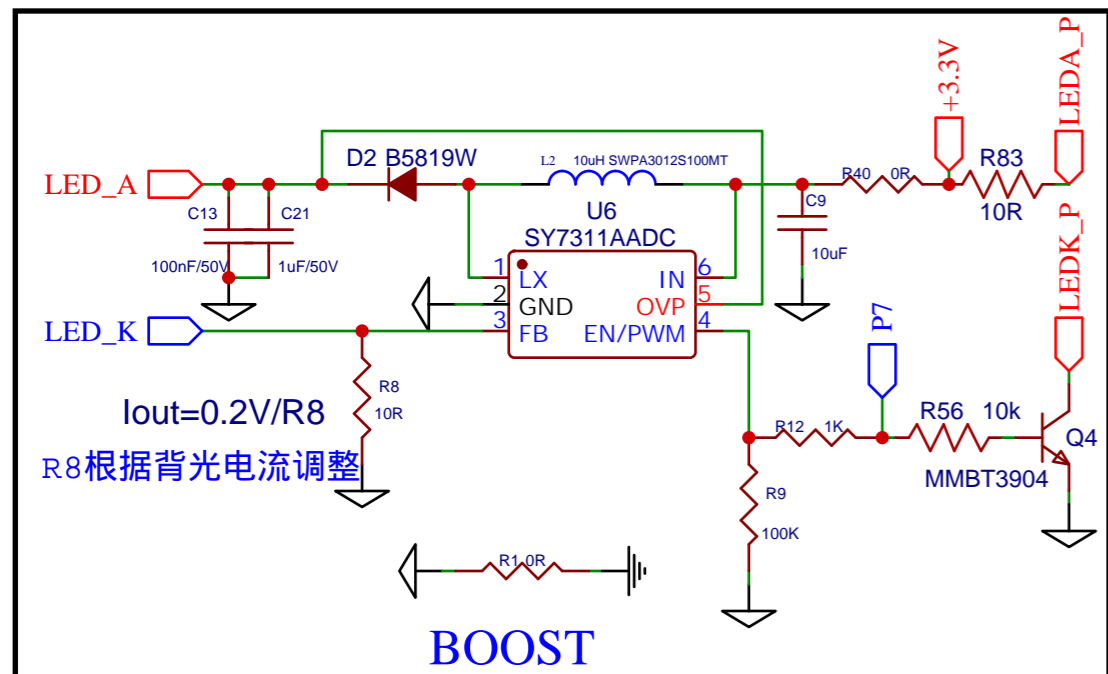


Optional DC/DC:  
 ETA3427: 2uA ; HX3406 : 40uA



# POWER

TITLE: BK7256_QFN80_8X8		REV: 1.3
		Company: Beken Corporation
		Date: 2023-12-09    Drawn By: Beken
		Sheet: 3/5



# BK7256 SCH and PCB layout Version Change List

Data	Version	Author	Description
2023.02.01	V1.0	Beken	Based on EVB QFN68 V5.0
2023.05.22	V1.1	Beken	R73=18R,C34=NC,Update RF matching values
2023.08.01	V1.2	Beken	Add optional DC/DC,32.768K
2023.12.09	V1.3	Beken	Replace QSPI with SPI LCD;Add SDIO 10K pull-up;Add ANT Zopt